

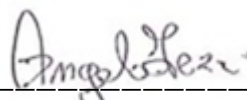


n. 114 – del 08/08/2024

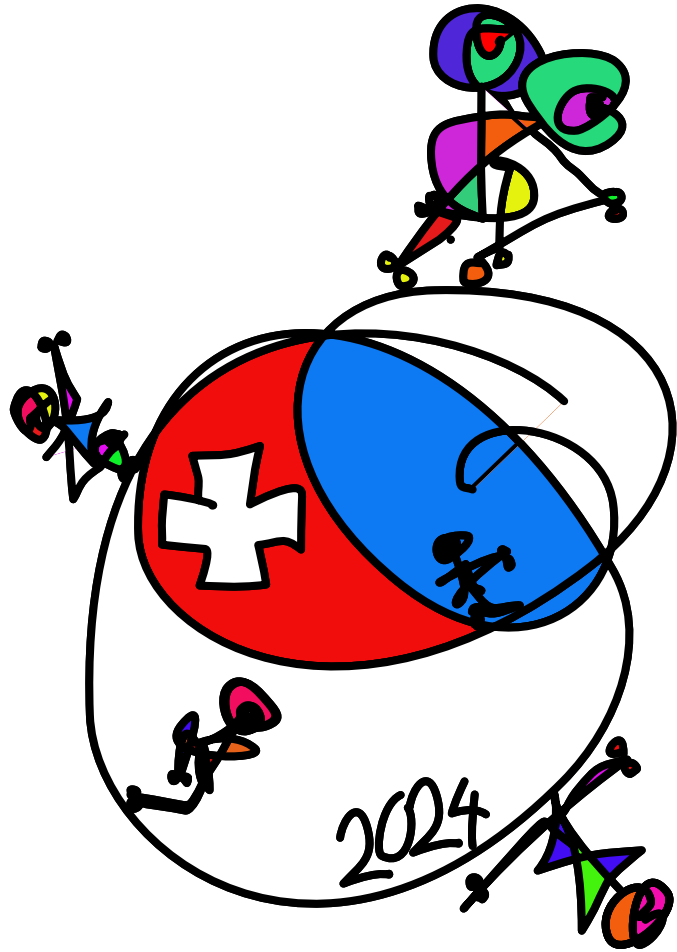
**Europe Cup 2024
Free, Pairs, Dance
5/13 ottobre - Zurigo (Svizzera)**

In riferimento al CU 112 del 7 agosto si allega il comunicato di World Skate Europe che riporta le informazioni relative alla prossima Coppa Europa che si svolgerà a Zurigo (Svizzera) dal 5 al 13 ottobre p.v.

Nel comunicato sono presenti le informazioni relative alla città, all'impianto e l'elenco degli hotel convenzionati.

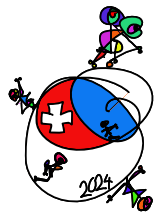


IL SEGRETARIO GENERALE
(Angelo Iezzi)



CUP OF EUROPE

*Artistic Roller Skating
Zurich Switzerland
5-13 October 2024*



CUP OF EUROPE
Artistic Roller Skating
Zurich Switzerland
5-13 October 2024



Cup of Europe 2024

Zurich, Switzerland

FREESKATING, PAIRS, SOLO DANCE AND DANCE COUPLES

5TH TO 13TH OF OCTOBER

General information about Switzerland

CURRENCY: Swiss Franc is the official currency of Switzerland

CAPITAL CITY: Bern

HOSTING CITY OF CUP OF EUROPE: Zurich

NEAREST AIRPORT: Zurich – Kloten

ZURICH WEATHER: The temperatures in Zurich in October are rather cool with temperatures of 5°C and 15°C. One is expecting 3 to 8 days of rain in Zurich in October.

TRAVELING: Switzerland is part of the Schengen area.

AC OUTLETS / SOCKETS: Switzerland requires a type J plug connector. This connector is compatible to type C plugs (2 pin, Euro) for any other type, an adapter is required

Hosting City Zurich

- With a population of almost 500,000, Zurich is the largest city in Switzerland
- Most of Zurich's sights are grouped in and around the Old Town and are therefore easiest to reach on foot or by taking public transportation. In addition to buildings and monuments, Zurich's location on Lake Zurich is also worth a look. In good weather, Bellevue or Bürkliplatz offer beautiful views of the lake and the Alps.



Travelling to Zurich

BY PLANE:

➤ ZURICH AIRPORT:

- Zurich Airport (ZRH) is the largest airport in Switzerland.
- The airport is located 13 kilometers north of the city center of Zurich in the municipality of Kloten. By train, it takes about 20 minutes to reach the city center or the rink.

➤ EURO AIRPORT BASEL-MULHOUSE:

- Basel-Mulhouse International Airport (BSL, MLH, EAP) is located 6 km northwest of Basel (Switzerland)
- It is a 1,5 hours train ride to Zurich

BY TRAIN:

- **Zurich main station** is operated by several international trains (for example TGV, ICE and Trenitalia)

Rink

LOCATION: Sportzentrum Fronwald,
Fronwaldstrasse 115, 8046 Zürich

SKATING DIMENSIONS: 21 x 43 m

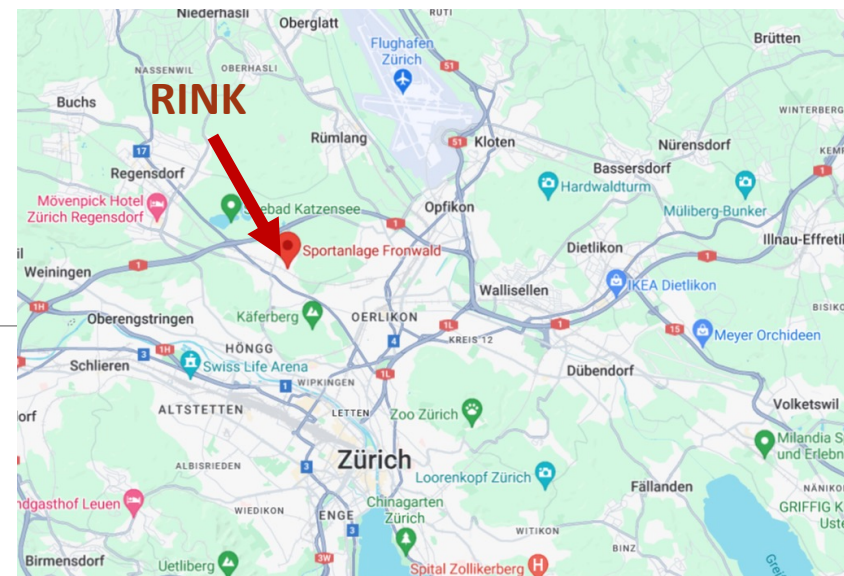
SURFACE: wooden floor

CAPACITY: 200 people

SMALL TRAINING RINK: 20 x 8 m

DRESSING ROOMS: 12

RECOMMENDED WHEELS: Giotto 47D



Public transportation



- Zurich has a well-connected public transportation system
- Train station near the rink (Zurich-Affoltern): S21, S6, Bus 62
- Distances from Zurich-Affoltern to:
 - Oerlikon: 5 minutes by train (S6)
 - Main station: 14 minutes by train (S6)
 - Airport: 22 minutes by train/bus
- Further information on public transportation: www.zvv.ch

Food restaurants in proximity to the rink

AT THE Rink: small selection of drinks, snacks and little meals are provided at the rink

- **MIGROS RESTAURANT:** self –service restaurant; <https://filialen.migros.ch/de/migros-restaurant-zuerich-affoltern> (450 m, 5 minutes walk)
- **RISTORANTE PIZZERIA DA ENZO:** <https://ristorante-pizzeria-daenzo.ch/> (5 minutes walk)
- **PIZZERIA PIAZZA:** <https://schnellaberguet.ch/pizzeriapiazza/> (5 minutes walk)
- **CINNAMON GARTEN:** indisches Restaurant; <https://cinnamongarden.ch/> (5 minutes walk)
- **RESTAURANT BÜSI:** www.restaurant-büsi.ch (1 km, 10 minutes walk)
- **WIRTSCHAFT UNTERDORF:** www.wirtschaft-unterdorf.ch (1 km, 10 minutes walk)

List of hotels

Kronenhof Boutique Hotel *** (10 minutes walk) - **hotel for the Officials and WSE Delegation**

Prices double room : ~190 Swiss francs (with breakfast)

<https://hotel-kronenhof.ch/>



List of hotels

Mövenpick Hotel Zürich Regensdorf **** (8 minutes by car, 20 minutes by train)

Prices double room : ~160 Swiss francs (without breakfast)

<https://movenpick.accor.com/en/europe/switzerland/zurich/hotel-zurich-regensdorf.html>



List of hotels

IBIS Hotel Zürich Messe Airport*** (12 minutes by car, 25 minutes by train)

Prices double room : ~ 150 Swiss francs (breakfast included)

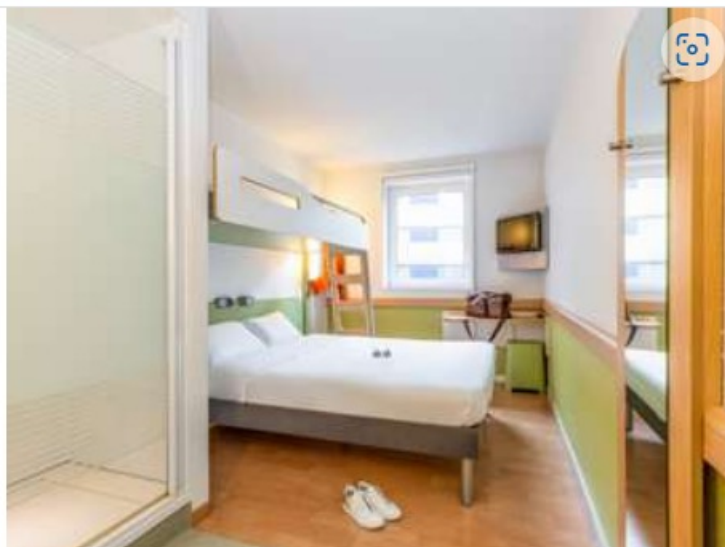
https://all.accor.com/hotel/2980/index.de.shtml?utm_campaign=seo+maps&utm_medium=seo+maps&utm_source=google+Maps



List of hotels

IBIS budget Zurich city west** (15 minutes by car, 20 minutes by train)

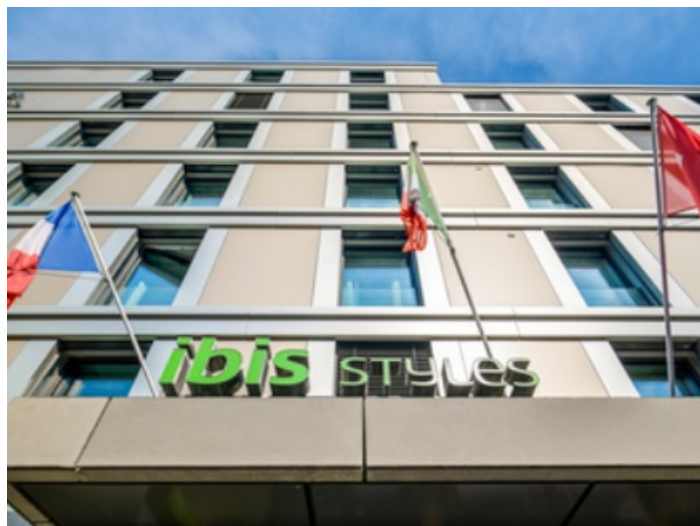
Prices double room : ~ 120 Swiss francs (breakfast included)



List of hotels

IBIS styles Zurich city center** (16 minutes by car, 20 minutes by train)

Prices double room : ~ 200 Swiss francs (breakfast included)



Registration and contact

REGISTRATION

All the process and info for registration and schedule of competitions for the Cup of Europe 2024 will be provided by World Skate Europe



CONTACTS

Contact details Swiss federation:

President of Swiss Artistic Rollerskating association, Raphael Egli,
raphael.egli@srv-kunstlauf.ch

Webpage: www.srv-kunstlauf.ch

Contact details organizer:

coe-zurich-2024@srv-kunstlauf.ch ; Webpage: www.cup-of-europe.ch

Contact for accomodation:

For all questions about your accomodation, please send the request directly to the designated hotels



We are looking very much forward welcoming you in
Zurich